



Tesab Show Circuit 2015

This year the Tesab show circuit kicks off in Toronto, Canada from the 5th - 6th of March. On the stand will be a Tesab 10570 Jaw Crusher and 623S secondary impact crusher.

Next up is the inaugural CQMS show in Tullamore, Ireland from the 17th - 18th of April. On display will be a Tesab 1012T impactor, a Tesab 10570 Jaw crusher and a 623CT tracked secondary crusher.



TESAB

Engineered for Power. Built to Last.

January 2015 | issue five

T-NEWS

The Tesab Newsletter



Trackstack 8542TBF Track Belt Feeder

More new Stackers from Trackstack.



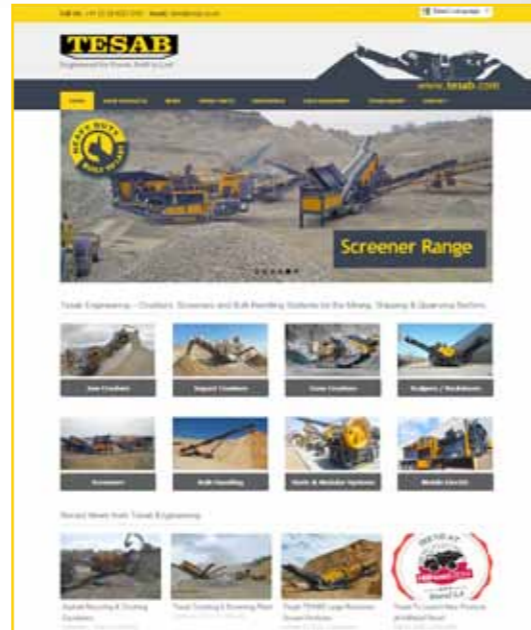
Trackstack 6542TPS Tracked Picking Station



Tesab 1860 Reclaimer Screener

In the next edition....

- New Range of Recycling Equipment
- Heavy Equipment, Toronto Show Review
- CQMS, Ireland 2015, Show Review
- Dealer Training School Updates
- Case study updates on product applications
- New product launches..... And much more...



New Tesab & Trackstack Websites now Live

The new Tesab websites are now up and running with a fresh and user friendly interface as well as being tablet and phone functional. The latest news, product updates as well as useful product application details can be found. Visit www.tesab.com

Tesab Sponsor in Drift Car Championships



Keep an eye out for Shaun Sweeney in the Tesab car.

TESAB

Gortrush Industrial Estate
Omagh, County Tyrone
Northern Ireland
BT78 5EJ
T: +44 (0) 28 8225 2781
F: +44 (0) 28 8225 2801
Email: sales@tesab.co.uk
Web: www.tesab.com

Tesab expands into new territories with new products.



Tesab Crushing and Screening Train in South America. 10570, 1200TC and TS3600 Producing Aggregates



Tesab rebranded in 2014 and the new look now incorporates our core principles of heavy duty equipment that is built to last.



Con-Expo / Con-Agg 2014

The tri-annual trade show in Las Vegas was the focal point for the launch of the 1200TC tracked cone crusher in the North American market. Overall there was huge turnout at the show and proved to be a huge success.



Dealer Day out in Las Vegas

Trackstack Material Handling Solutions

Tesab celebrates milestone of 1000 impact crushers!

In January 2015 Tesab produced their 1000th Mobile Impact Crusher. This milestone proves the durability and continued success of the Tesab 623 range of secondary impact crushers.

Tesab have been manufacturing mobile impact crushers in Omagh since 1992. However, the impact crusher units have been manufactured in Sweden since the early 70's. So over 40 years of development has made

the crusher the success it is.

Along with the world renowned impact crushers the company also manufacture and supply a full range of jaw crushers, cone crushers, and screening plant.

Also, there has been recent development with new lines of bulk handling equipment manufactured under the Trackstack Range.



Tesab Staff with the 1000th 623S impact Crusher

Message from Don Smyth, Tesab MD



"I would like to take the opportunity to say thank you to all our customers for their continued business and support. We look forward to a busy 2015. And keep an eye out for some innovate new products from Tesab that will keep you, the customer, ahead of the pack!"

Tesab Partner with John Ledwith of Irlequip for Irish market.



Irlequip New Tesab Dealer for Ireland!

Tesab and Irlequip have cemented their long standing relationship with an agreement for the two companies to distribute Tesab Crushers and Screens in the Irish market.

This has many benefits for local customers. It provides rental and highly competitive lease finance agreements. Plus an

excellent spare parts and support service from their central base in Moate County Westmeath.

A selection of stock units available can be seen at the CQMS show in Tullamore from 17th - 18th of April.

Contact Irlequip on +353 (0)90 644 8877 or email info@irlequip.com

Tesab 10580 Tracked Jaw Crusher

McCabes Earthworks have been using Tesab crushers for over 20 years right across Ireland. The company, now under the direction of John McCabe, are among Ireland's leading crushing contractors and as such run the latest and crucially, the most reliable equipment available to them.

They're achieving excellent results from using both the Tesab 10570 and the 10580 as their primary jaw crushers within their fleet. A recently delivered 10580 jaw crusher, with a C13 440HP Engine, is producing over 4000 ton per 11 hour shift on a current contract job.

"The combination of high tonnage and reliability, coupled with the ability to deal with the hard rock environments experienced across Ireland make the Tesab range of jaw crushers our machine of choice for primary crushing"

**Johnathon Murray,
McCabe Earthworks**

"The Tesab 10580 is the most reliable primary jaw crusher on the market and comes into a class of its own on hard rock"



"Heavy duty and robust design for mining & quarry applications"



10580 'Hard Rock' Jaw

GENUINE SPARE PARTS

Contact spares@tesab.co.uk for supply and pricing on Tesab 'Genuine' Spare Parts, which are manufactured to perform better and last longer.



Also ceramic type hammers now available for the 623 and 643 crushing units.

Asphalt Recycling & Crushing Excellence...

A New Tesab 1012TS and 623CT asphalt crushing plant, has been installed in Baltimore, USA.

Using a x2 deck independent pre-screen installed on the 1012TS, a 1 1/2" minus (37.5mm) material can be removed at 150TPH from the side belt. This can be sold as low grade "Trench Fill".

The final product is screened at 9/16" (14mm) minus, with production at 150TPH. Oversized material is returned to the Tesab 623CT impact crusher.

Overall the Tesab asphalt crushing and screening plant is directly increasing Asphalt content to the tar plant from 5% to 8%. This is a massive saving for the Company.

The unique design of the Tesab crushing unit, achieves a much higher percentage of material passing specification in a single pass of the crusher. The performance of the 623CT in this application is equivalent to that of much larger type crushers from other manufacturers.



1012TS & 623CT in Asphalt Recycling Application.